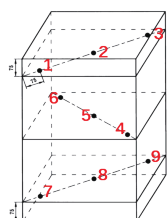
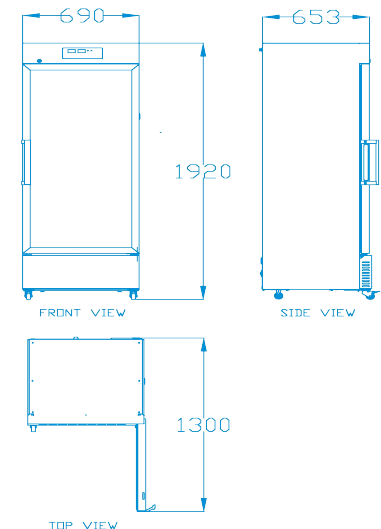
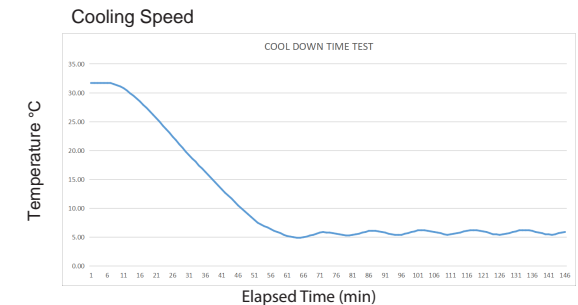
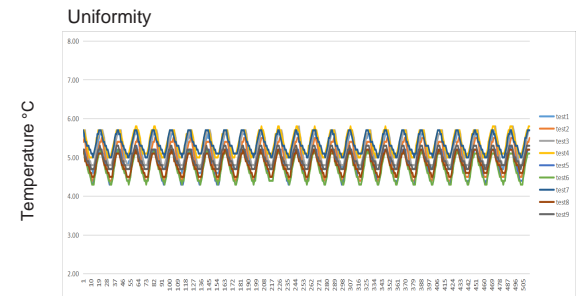


| Application, Rating, & Electrical Data |  |
|--|--|
| Application                            | Pharmacy refrigerator  |
| Storage Volume ( L )                   | 416 ( 14.7 co.ft)  |
| Temperature Range                      | +2°C to +8°C   |
| Default Set Point                      | +5°C   |
| Power                                  | 115V/60Hz  |
| Current                                | 3A   |
| Power Cord Length                      | 1.7m   |
| Certification                          | CE/UL  |
| Door type                              | Electrically Heated Glass Door ( solid door optional )             |
| Application Environment                | Non-corrosive, non-flammable, non-explosive                        |
| Ambient Operating Temperature          | +16°C to +32°C   |
| Refrigeration                          |  |
| Refrigeration System                   | Forced-air/hydrocarbon Refrigerant                                 |
| Compressor                             | Hermetic, variable speed   |
| Condenser Type                         | Air-cooled   |
| Expansion Device                       | Cap tube   |
| Evaporator Type                        | Fin and tube   |
| Defrost Method                         | Automatic  |
| Refrigerant                            | R600a  |
| Controller / Configuration Settings    |  |
| Display screen                         | LED  |
| Controller Type                        | Microprocessor   |
| Security                               | Lockable door, password protected settings                         |
| Control Sensor                         | RTD, stainless steel   |
| Communication Ports                    | USB, Remote alarm contacts   |
| Power Failure Alarm                    | Yes  |
| High/Low Alarms                        | Yes, fully adjustable  |
| Door Ajar Alarm                        | Yes, fully adjustable  |
| Min/Max Temperature                    | Yes, display and reset   |
| Download                               | Yes, via USB. PDF  |
| Temperature Log                        | Yes, download via USB  |
| Temperature Monitoring Ballast         | Yes  |
| Battery Back-up                        | Yes, 15 hr display and alarm back-up   Rechargeable 12V, lead acid |
| Dimensions                             |  |
| Interior (w x h x d)mm                 | 595x514x1343 mm  |
| Exterior (w x h x d)                   | 690x653x1920 mm  |
| Access Port                            | Access Port- for external monitoring probe(s) (25 mm diameter)     |
| Shelf                                  | 5   35 kg max capacity/shelf                                       |
| Wheels                                 | 4, 2 locking casters   |
| Net Weight                             | 88 kg  |
| Gross Weight                           | 97 kg  |

| Performance Characteristics (normal operating conditions) |       |
|---|-------|
| Uniformity   ( °C )                                       | ±1.0  |
| Recovery to 8°C after 1 min door opening   ( min )        | 13.5  |
| Temperature fluctuation   ( °C )                          | < 2   |
| Energy consumption   ( kWh/day )                          | 2     |
| Noise emission   ( dB )                                   | 55/60 |
| Heat rejection   ( BTU/hr )                               | 460   |
| Pull-down time to 6°C   ( min )                           | 65    |

All performance data from 416L refrigerator, 25 ambient, 5.0°C



Location of test probes

Typical Temperature Map

|     | test1 | test2 | test3 | test4 | test5 | test6 | test7 | test8 | test9 |
|-----|-------|-------|-------|-------|-------|-------|-------|-------|-------|
| Avg | 4.88  | 5.24  | 5.15  | 4.13  | 4.32  | 4.92  | 4.71  | 4.78  | 5.37  |
| Max | 5.30  | 5.60  | 5.50  | 4.80  | 4.70  | 5.20  | 5.00  | 5.10  | 5.70  |
| Min | 4.40  | 4.90  | 4.70  | 3.50  | 4.00  | 4.60  | 4.40  | 4.40  | 5.10  |

